

TALLEST

**8800T LADIES FLOWY RACERBACK**

DESCRIPTION: 3.7 oz. 65/35 polyester/viscose

48 QTY: S-XL, 2XL

72+ QTY: S-XL, 2XL

*48 Piece Minimum & Quick Turnarounds!*



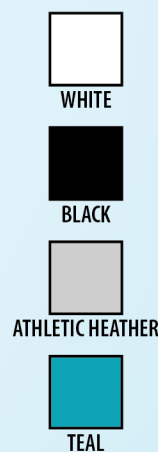
SPRIG

**1580 LADIES CROP TEE**

DESCRIPTION: 4 oz. 60/40 combed ring-spun cotton polyester

48 QTY: S-XL, 2X, 3XL

72+ QTY: S-XL, 2XL, 3XL



SUMMER VIBES

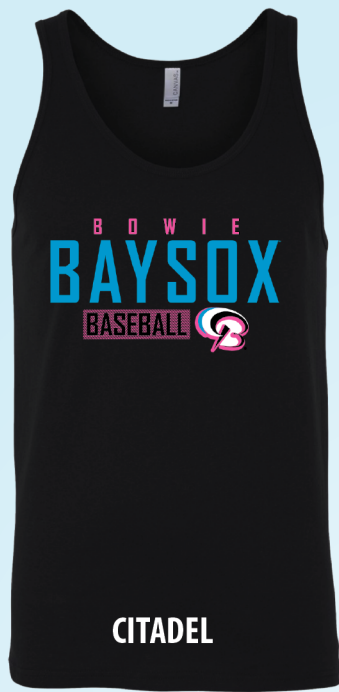
**8800Y YOUTH FLOWY RACERBACK**

DESCRIPTION: 3.7 oz. 65/35 polyester/viscose

48 QTY: S-L

72+ QTY: S-L





**3480 ADULT JERSEY TANK**

DESCRIPTION: 4.2 oz. 100% Airlume combed & ring-spun cotton

48 QTY: S-XL, 2XL

72+ QTY: S-XL, 2XL



**3480CVC ADULT CVC TANK TOP**

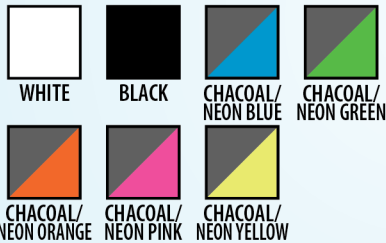
DESCRIPTION: 4.2 oz. 52/48 Airlume combed & ring-spun cotton/polyester

48 QTY: S-XL, 2XL

72+ QTY: S-XL, 2XL



STATE LOGO



**112 ADULT RICHARDSON SNAPBACK TRUCKER CAP**

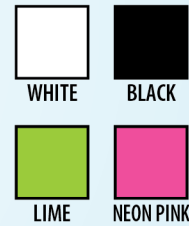
DESCRIPTION: 60/40 cotton/polyester

48 QTY: OSFM (REORDERS ONLY)

72+ QTY: OSFM



COPA CAP LOGO



**YCP80 YOUTH TWILL CAP**

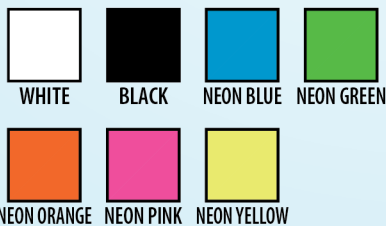
DESCRIPTION: 100% cotton twill, 80/20 poly/cotton (neons)

48 QTY: OSFM (REORDERS ONLY)

72+ QTY: OSFM



RETRO JERSEY



**VC300A ADULT BIO WASHED TWILL CAP**

DESCRIPTION: 100% cotton bio-washed chino twill

48 QTY: OSFM

72+ QTY: OSFM

**FOR SUMMER VIBE IDEAS**

**CONTACT**

*Bobbi Larson*

*Shanna Kirsch*

BLARSON@BIMMRIDDER.COM

SKIRSCH@BIMMRIDDER.COM

